

PRODUCT CATALOGUE



CONTENTS

CAPE HAKE (*MERLUCCIUS CAPENSIS/PARADOXUS*)

HGT CAPE HAKE.....	4
LAND FROZEN SKIN ON CAPE HAKE FILLETS.....	5
SEA FROZEN CAPE HAKE FILLETS.....	6
CAPE HAKE STEAKS.....	7
CAPE HAKE LOINS.....	8
CAPE HAKE BELLIES.....	9
CAPE HAKE FORMED PORTIONS.....	10
CAPE HAKE SAUSAGE	11
CAPE HAKE MINCED BLOCK.....	12
CAPE HAKE MEDALLIONS.....	13

MONK FISH (*LOPHIUS VOMERINUS*)

SKIN-ON MONK TAILS.....	14
SKINLESS MONK TAILS.....	15
MONK FILLETS.....	16

HORSE MACKEREL

CAPE HORSE MACKEREL (<i>TRACHURUS CAPENSIS</i>).....	17
--	----

SQUID

PATAGONIAN SQUID TUBES & TENTACLES (<i>LOLIGO PATAGONICA</i>).....	18
SQUID TUBES (<i>TODARODES SPP</i>).....	19
SQUID HEADS (<i>TODARODES SPP</i>).....	20

OTHER BY-CATCH

KINGKLIP FILLETS (<i>GENYPTERUS CAPENSIS</i>).....	21
SKINLESS ANGELFISH FILLETS (<i>BRAMA BRAMA</i>).....	22
ALFONSINO (<i>BERYX SPLENDENS</i>).....	23
GURNARD (<i>CHELIDONICHTHYS CAPENSIS</i>).....	24
JACOPEVER (<i>HELICOLENUS DACTYLOPTERUS</i>).....	25
JOHN DORY (<i>ZEUS CAPENSIS</i>).....	26
SOLE (<i>AUSTROGLOSSUS MICROLEPIS</i>).....	27
REDS (<i>DENTEX MACROPHthalmus</i>).....	28
RIBBON FISH (<i>LEPIDOPUS CAUDATUS</i>).....	29
SNOEK (<i>THYRSITES ATUN</i>).....	30

HGT CAPE HAKE

(MERLUCCIOUS CAPENSIS/PARADOXUS)



DESCRIPTION
HEADED, GUTTED
AND TAILED CAPE HAKE



FREEZING
SEA FROZEN
OR LAND FROZEN



CATCHING AREA
FAO 47
SOUTHEAST ATLANTIC



SIZE CODING	GRADING	PRESENTATION	PACKAGING
OOO	40-80G.	INT	12 KG. OR 5KG OR 2X5KG OR 4X5KG OR RDW
OO	80-200 G.	INT/ IWP	12 KG. OR 5KG OR 2X5KG OR 4X5KG OR RDW

LAND FROZEN SKIN ON CAPE HAKE FILLETS

(MERLUCCIUS CAPENSIS/PARADOXUS)



DESCRIPTION

CAPE HAKE FILLETS
SKIN ON, SKINLESS,
PBI OR PBO



FREEZING

LAND FROZEN



CATCHING AREA

FAO 47
SOUTHEAST ATLANTIC



SIZE CODING	GRADING	PRESENTATION	PACKAGING
1	60-115G (2/4 OZ.)	IWP	5KG OR 2X5KG OR 4X5KG
2	115-170G (4/6 OZ.)	IWP	5KG OR 2X5KG OR 4X5KG
3	170-225G (6/8 OZ.)	IWP	5KG OR 2X5KG OR 4X5KG
4	225G-285G (8/10 OZ.)	IWP	5KG OR 2X5KG OR 4X5KG
5	285-390G (10/14 OZ.)	IWP	5KG OR 2X5KG OR 4X5KG
5+	390G + (14 OZ.+)	IWP	5KG OR 2X5KG OR 4X5KG

SEA FROZEN CAPE HAKE FILLETS

(MERLUCCIOUS CAPENSIS/PARADOXUS)



DESCRIPTION

CAPE HAKE FILLETS
SKIN ON, SKINLESS,
PBI OR PBO



FREEZING

SEA FROZEN



CATCHING AREA

FAO 47
SOUTHEAST ATLANTIC



SIZE CODING	GRADING	PRESENTATION	PACKAGING
S/L 00	30-60G.	INT; PBO/PBI	7KG OR 2X7KG
S/L 0	60-90G.	INT; PBO/PBI	7KG OR 2X7KG
S/L 1	90-130G.	INT; PBO/PBI	7KG OR 2X7KG
S/L 2	130-170G.	INT; PBO/PBI	7KG OR 2X7KG
S/L 3	170-210G.	INT; PBO/PBI	7KG OR 2X7KG
S/O 1	60-100G.	INT; PBO/PBI	7KG OR 2X7KG
S/O 2	100-140G.	INT; PBO/PBI	7KG OR 2X7KG
S/O 3	140-180G.	INT; PBO/PBI	7KG OR 2X7KG
S/O 4	180-220G.	INT; PBO/PBI	7KG OR 2X7KG

CAPE HAKE STEAKS

(MERLUCCIOUS CAPENSIS/PARADOXUS)



DESCRIPTION
CAPE HAKE STEAKS
SKIN ON



FREEZING
LAND FROZEN



CATCHING AREA
FAO 47
SOUTHEAST ATLANTIC



SIZE CODING	GRADING	PRESENTATION	PACKAGING
M	80-120G	IWP	5KG OR 2X5KG OR 4X5KG
L	120-160G	IWP	5KG OR 2X5KG OR 4X5KG
XL	160-200G	IWP	5KG OR 2X5KG OR 4X5KG

CAPE HAKE LOINS

(MERLUCCIOUS CAPENSIS/PARADOXUS)



DESCRIPTION
CAPE HAKE LOINS
SKIN ON



FREEZING
LAND FROZEN



CATCHING AREA
FAO 47
SOUTHEAST ATLANTIC



SIZE CODING	GRADING	PRESENTATION	PACKAGING
M	80-120G	IWP	400G, 5KG OR 2X5KG OR 4X5KG
L	120-160G	IWP	400G, 5KG OR 2X5KG OR 4X5KG
XL	160-200G	IWP	400G, 5KG OR 2X5KG OR 4X5KG

CAPE HAKE BELLIES

(MERLUCCIUS CAPENSIS/PARADOXUS)



DESCRIPTION
CAPE HAKE BELLIES
SKIN ON



FREEZING
LAND FROZEN



CATCHING AREA
FAO 47
SOUTHEAST ATLANTIC



GRADING
30-70G

PRESENTATION
IWP

PACKAGING
5KG OR 2X5KG OR 4X5KG

CAPE HAKE FORMED PORTIONS

(*MERLUCCIOUS CAPENSIS/PARADOXUS*)



DESCRIPTION

CAPE HAKE PORTIONS FORMED IN DIFFERENT SHAPES (LOINS, SUPREMA'S OR FILLETS) USING MOLDS OR POUCHES. SKINLESS PBO.



FREEZING

LAND FROZEN



CATCHING AREA

FAO 47
SOUTHEAST ATLANTIC



PRESENTATION

IWP

PACKAGING

5KG OR 2X5KG OR 4X5KG

CAPE HAKE SAUSAGE

(MERLUCCIUS CAPENSIS/PARADOXUS)



DESCRIPTION

PLASTIC CASING
STUFFED WITH CAPE
HAKE PBO FILLETS OR
PIECES OF PBO FILLETS



FREEZING

SEA FROZEN



CATCHING AREA

FAO 47
SOUTHEAST ATLANTIC



SIZE	GRADING	PRESENTATION	PACKAGING
D6	DIAMETER 6 CM, 6 PIECES PER CARTON	IWP	RANDOM WEIGHT CARTON (RDW)
D9	DIAMETER 9 CM, 5 PIECES PER CARTON	IWP	RANDOM WEIGHT CARTON (RDW)

CAPE HAKE MINCED BLOCK

(MERLUCCIUS CAPENSIS/PARADOXUS)



DESCRIPTION

CHOPPED PIECES OF
CAPE HAKE FILLETS
IN THE SHAPE OF A
TABLET



FREEZING

LAND FROZEN



CATCHING AREA

FAO 47
SOUTHEAST ATLANTIC



PRESENTATION

2 WAXED INNER CARTONS INSIDE A MASTER CARTON

PACKAGING

15KG (2X7.5KG)

CAPE HAKE MEDALLIONS

(MERLUCCIUS CAPENSIS/PARADOXUS)



DESCRIPTION

SLICES FROM CAPE
HAKE SAUSAGE, IQF



FREEZING

LAND FROZEN



CATCHING AREA

FAO 47
SOUTHEAST ATLANTIC



GRADING

60 G.

100 G.

120 G.

PRESENTATION

IN BULK INTO AN INNER PLASTIC BAG

IN BULK INTO AN INNER PLASTIC BAG

IN BULK INTO AN INNER PLASTIC BAG

PACKAGING

5 KG

5 KG

5 KG

SKIN-ON MONK TAILS

(*LOPHIUS VOMERINUS*)



DESCRIPTION
SKIN-ON MONK TAILS



FREEZING
SEA FROZEN



CATCHING AREA
FAO 47
SOUTHEAST ATLANTIC



SIZE	GRADING	PRESENTATION	PACKAGING
1	150-300 G	IWP	12 KG
2	300-600 G	IWP	12 KG
3	600-1000 G	IWP	12 KG
4	1000-1500 G	IWP	RDW

SKINLESS MONK TAILS

(LOPHIUS VOMERINUS)



DESCRIPTION
SKINLESS MONK TAILS



FREEZING
SEA FROZEN
OR LAND FROZEN



CATCHING AREA
FAO 47
SOUTHEAST ATLANTIC



SIZE CODING	GRADING	PRESENTATION	PACKAGING
X	40-150 G.	IWP/ INT	RDW
1	150-300 G	IWP	12 KG
2	300-600G	IWP	12 KG
3	600-1000 G	IWP	12 KG
4	1000-1500 G	IWP	RDW
5	>1500G	IWP	RDW

MONK FILLETS

(LOPHIUS VOMERINUS)



DESCRIPTION
SKINLESS MONK
FILLETS



FREEZING
LAND FROZEN



CATCHING AREA
FAO 47
SOUTHEAST ATLANTIC



SIZE	GRADING	PRESENTATION	PACKAGING
0	<60G	IWP	5 KG
1	60-115G	IWP	5 KG
2	115-170G	IWP	5 KG

CAPE HORSE MACKEREL

(TRACHURUS CAPENSIS)



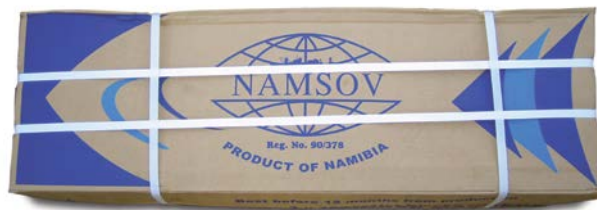
DESCRIPTION
WHOLE ROUND CAPE
HORSE MACKEREL



FREEZING
LAND FROZEN AND
SEAFROZEN



CATCHING AREA
FAO 47
SOUTHEAST ATLANTIC



SIZE CODING	GRADING	PRESENTATION	PACKAGING
14 M	>14 CM	INT/IQF	5KG (IQF) OR 12KG OR 30KG
16 M	14-16 CM	INT/IQF	5KG (IQF) OR 12KG OR 30KG
16+	16-18 CM	INT/IQF	5KG (IQF) OR 12KG OR 30KG
18+	18-20 CM	INT	5KG (IQF) OR 12KG OR 30KG
20+	20-25CM	INT	5KG (IQF) OR 12KG OR 30KG
25+	25 CM <	INT	5KG (IQF) OR 12KG OR 30KG

PATAGONIAN SQUID TUBES AND TENTACLES

(*LOLIGO PATAGONICA*)



DESCRIPTION

SKINLESS, GUTTED
TUBES: WINGS AND
FEATHERS REMOVED;
HEAD/TENTACLES:
MUSCLES AND EYES
REMOVED



FREEZING

LAND FROZEN
20% GLAZE IQF



CATCHING AREA

FAO 41
SOUTHWEST ATLANTIC



GRADING

8 - 15 CM

PRESENTATION

- 2/3 BLACK OR WHITE PLASTIC TRAYS: TUBES FINGER LAID.
50/50 OPPOSITE TOWARDS THE NARROW PART OF THE TUBE
- 1/3 BLACK OR WHITE PLASTIC TRAY: HEAD/TENTACLES

PACKAGING

7.2KG (9X800G)

SQUID TUBES

(TODARODES SPP.)



DESCRIPTION

CLEAN SQUID TUBES
(NO GUTS, FEATHER,
SKIN OR WINGS)



FREEZING

LAND FROZEN
OR SEA FROZEN



CATCHING AREA

FAO 47
SOUTHEAST ATLANTIC



PRESENTATION

INT

PACKAGING

2X7.5KG OR 4X5KG OR RDW

SQUID HEADS

(TODARODES SPP.)



DESCRIPTION

CLEAN SQUID HEADS
(NO MOUTH OR EYES)



FREEZING

LAND FROZEN
OR SEA FROZEN



CATCHING AREA

FAO 47
SOUTHEAST ATLANTIC



PRESENTATION

BLOCK

PACKAGING

10KG OR RDW

KINGKLIP FILLETS

(GENYPTERUS CAPENSIS)



DESCRIPTION
SKINLESS KINGKLIP
FILLETS, PBO



FREEZING
LAND FROZEN



CATCHING AREA
FAO 47
SOUTHEAST ATLANTIC



SIZE	GRADING	PRESENTATION	PACKAGING
0	<60 G	INT/IWP	5 KG
1	60-100 G	INT/IWP	5 KG
2	100-200 G	INT	5 KG
3	200-400 G	INT	5 KG
4	400-600 G	INT	7 KG
5	600-800 G	INT	7 KG
6	800-1200 G	INT	7 KG

SKINLESS ANGELFISH FILLETS

(BRAMA BRAMA)



DESCRIPTION
SKINLESS ANGELFISH
FILLETS, PBO



FREEZING
LAND FROZEN



CATCHING AREA
FAO 47
SOUTHEAST ATLANTIC



SIZE CODING	GRADING	PRESENTATION	PACKAGING
0	<60 G	IWP/INT	5 KG OR 2X5KG
1	60-115G	IWP/INT	5 KG OR 2X5KG
2	115-170G	IWP/INT	5 KG OR 2X5KG
3	170-225G	IWP/INT	5 KG OR 2X5KG
4	225-285G	IWP/INT	5 KG OR 2X5KG
5	>285G	IWP/INT	5 KG OR 2X5KG

ALFONSINO

(BERYX SPLENDENS)



DESCRIPTION
WHOLEROUND



FREEZING
LAND FROZEN
OR SEA FROZEN



CATCHING AREA
FAO 47
SOUTHEAST ATLANTIC



PRESENTATION

INT

PACKAGING

10KG

GURNARD

(CHELIDONICHTHYS CAPENSIS)



DESCRIPTION
WHOLEROUND



FREEZING
LAND FROZEN
OR SEAFROZEN



CATCHING AREA
FAO 47
SOUTHEAST ATLANTIC



PRESENTATION

INT

PACKAGING

10KG

JACOPEVER

(*HELICOLENUS DACTYLOPTERUS*)



DESCRIPTION
WHOLEROUND



FREEZING
LAND FROZEN
OR SEA FROZEN



CATCHING AREA
FAO 47
SOUTHEAST ATLANTIC



PRESENTATION

INT

PACKAGING

10KG

JOHN DORY

(ZEUS CAPENSIS)



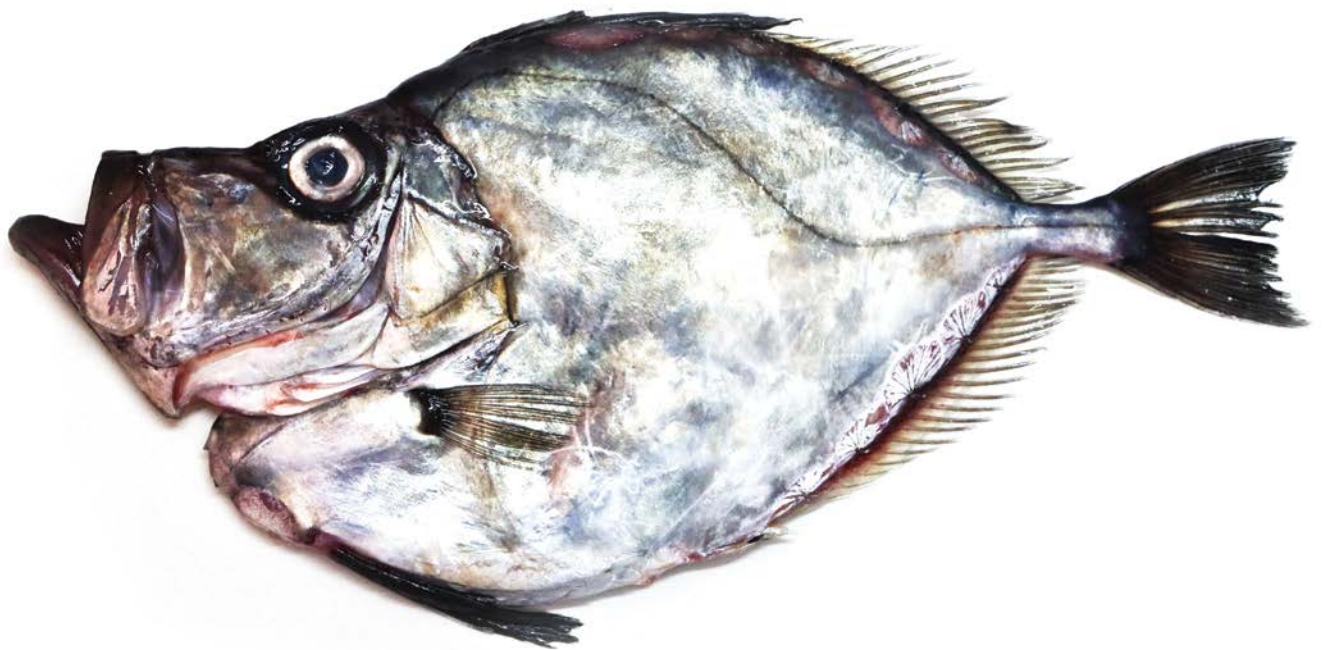
DESCRIPTION
WHOLEROUND



FREEZING
LAND FROZEN
OR SEAFROZEN



CATCHING AREA
FAO 47
SOUTHEAST ATLANTIC



PRESENTATION

INT

PACKAGING

10KG

SOLE

(AUSTROGLOSSUS MICROLEPIS)



DESCRIPTION
WHOLEROUND



FREEZING
LAND FROZEN
OR SEA FROZEN



CATCHING AREA
FAO 47
SOUTHEAST ATLANTIC



SIZE CODING	GRADING	PRESENTATION	PACKAGING
1	< 300 G.	INT	10KG
2	300 – 500 G.	INT	10KG
3	550 – 750 G.	INT	10KG
4	750 – 990 G.	INT	10KG
5	> 900 G.	INT	10KG

REDS

(DENTEX MACROPHthalmus)



DESCRIPTION
WHOLEROUND



FREEZING
LAND FROZEN
OR SEAFROZEN



CATCHING AREA
FAO 47
SOUTHEAST ATLANTIC



PRESENTATION

INT

PACKAGING

10KG

RIBBON FISH

(LEPIDOPUS CAUDATUS)



DESCRIPTION
HGT



FREEZING
LAND FROZEN
OR SEA FROZEN



CATCHING AREA
FAO 47
SOUTHEAST ATLANTIC



PRESENTATION

INT

PACKAGING

10KG

SNOEK

(THYRSITES ATUN)



DESCRIPTION
HGT



FREEZING
LAND FROZEN
OR SEAFROZEN



CATCHING AREA
FAO 47
SOUTHEAST ATLANTIC



PRESENTATION

INT

PACKAGING

RDW



FAO47



TUNACOR FISHERIES LTD

BEN AMATHILA AVENUE
P O BOX 70
WALVIS BAY
NAMIBIA
TEL: +264 64 218 100
FAX: +264 64 206 523
RECEPTION@TUNACOR.COM.NA
TUNACOR.COM.NA

© snowballstudio.com



TUNACOR SOUTH AFRICA (PTY) LTD

AGO4 GROSVENOR SQUARE,
10 PARK LANE, CENTURY CITY, 7441
CAPE TOWN
SOUTH AFRICA
TEL: (021) 001 4230
FAX: 086 575 6042
EMAIL: SONJA@TUNACOR.CO.ZA

FORTITUDE FISHING S.L.

AV. GARCÍA BARBÓN, 109 - 7º.
36201 VIGO (PONTEVEDRA)
SPAIN
(+34) 986 292 550
COMERCIAL@FORTITUDEFISHING.ES
WWW.FORTITUDEFISHING.ES